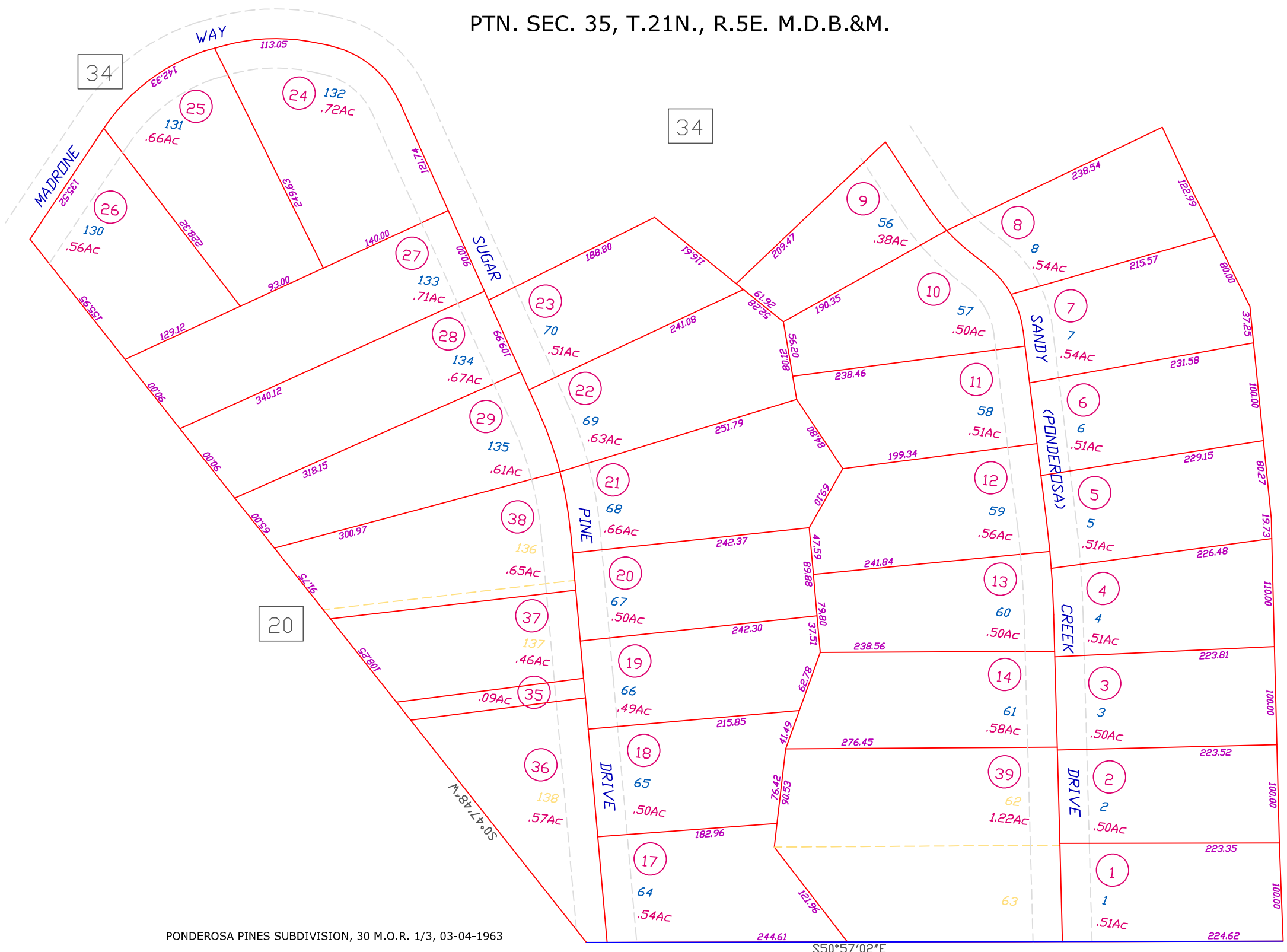


PTN. SEC. 35, T.21N., R.5E. M.D.B.&M.

62-35



PONDEROSA PINES SUBDIVISION, 30 M.O.R. 1/3, 03-04-1963

S50°57'02"E

BALD ROCK

ROAD

Butte County Assessor's Map  
Book 62, Page 35

22

All Assessor's maps are prepared for local property assessment purposes ONLY. Parcels shown thereon may not comply with State and local subdivision ordinances. No liability is assumed for use of information shown on any Assessor's map. ALL ACREAGES APPROXIMATE PER RECORDED INFORMATION.

|  |    |                 |            |
|--|----|-----------------|------------|
| Created by:                                    | DB | Created on:     | 03-02-2011 |
| Revised by:                                    | SL | Revised on:     | 08-11-2017 |
|  |    | Effective roll: | 2018-19    |
| Compiled by the Butte County Assessor's Office |    |                 |            |